



Government of India
Ministry of Earth Sciences



India Meteorological Department

PRESS RELEASE - 9

Time of issue: 1500 hours IST

Dated: 27-05-2021

Sub: Very Severe Cyclonic Storm 'Yaas' (pronounced as 'Yass') weakened into a depression over central parts of Jharkhand

Yesterday's severe cyclonic storm over northeast Odisha moved northwestwards and weakened into a cyclonic storm over North Odisha in the same evening (1730 hours IST) and into a deep depression in the same midnight (2330 hours IST of 26th). It moved northwestwards for some more time, recurved northwards, weakened into a depression and lay centered at 1130 hours IST of today, the 27th May, 2021 over central parts of Jharkhand, near latitude 23.2°N and longitude 85.5°E, about and 20 km east of Ranchi (Jharkhand) and 95 km southwest of Jamshedpur.

The system is very likely to move nearly northwards and weaken into a Well Marked Low pressure area during next 12 hours.

Warnings:

(i) Rainfall:

Jharkhand: Light to moderate rainfall at most places with heavy to very heavy rainfall at isolated places on 27th May.

Odisha: Light to moderate rainfall at most places with heavy rains at isolated places over north interior Odisha on 27th May.

North Chhattisgarh: Light to moderate rainfall at most places with heavy rains at isolated places on 27th May.

West Bengal & Sikkim: Light to moderate rainfall at most places with heavy to very rainfall at isolated places on 27th May.

Assam: Light to moderate rainfall at most places with heavy to very rainfall at isolated places over west Assam on 27th May.

Bihar: Light to moderate rainfall at many places with heavy to very heavy rainfall & extremely heavy rainfall at isolated places on 27th and heavy to very heavy rainfall at isolated places on 28th May.

East Uttar Pradesh: Light to moderate rainfall at many places with heavy to very heavy rainfall & extremely heavy rainfall at isolated places on 27th and heavy to very heavy rainfall at isolated places on 28th May.

(ii) Wind warning:

Squally wind speed reaching 45-55 kmph gusting to 65 kmph would prevail over Jharkhand and adjoining areas of Odisha, West Bengal, Bihar during next 12 hours and decrease gradually thereafter.

Contact: Cyclone Warning Division, Office of the Director General of Meteorology,
India Meteorological Department, Ministry of Earth Sciences.

Phone: (91) 11-24652484, FAX: (91) 11-24643128, 24623220, E-mail: cwdhq2008@gmail.com, Website: rsmcnewdelhi.imd.gov.in

Spatial rainfall distribution: Isolated: <25%, A few: 26-50%, Many: 51-75%, Most: 76-100%

Rainfall amount (mm): Heavy rain: 64.5 – 115.5, Very heavy rain: 115.6 – 204.4, Extremely heavy rain: 204.5 or more.

(iii) Damage expected & action suggested for Jharkhand and adjoining areas during next 12 hours:

- Minor damage to thatched houses/ huts.
- Minor damage to power and communication lines.
- Minor damage to Kutcha and some damage to Pucca roads.
- Breaking of tree branches. Damage to banana and papaya trees.
- Judicious regulation of rail and road traffic.

24 hours accumulated rainfall associated with the system is placed at Annexure-1.

The system is under continuous surveillance and the concerned state governments are being informed regularly.

Kindly visit www.rsmcnewdelhi.imd.gov.in and www.mausam.imd.gov.in for regular updates.

Contact: Cyclone Warning Division, Office of the Director General of Meteorology,
India Meteorological Department, Ministry of Earth Sciences.

Phone: (91) 11-24652484, FAX: (91) 11-24643128, 24623220, E-mail: cwdhq2008@gmail.com, Website: rsmcnewdelhi.imd.gov.in

Spatial rainfall distribution: Isolated: <25%, A few: 26-50%, Many: 51-75%, Most: 76-100%

Rainfall amount (mm): Heavy rain: 64.5 – 115.5, Very heavy rain: 115.6 – 204.4, Extremely heavy rain: 204.5 or more.

24 hours accumulated realised rainfall (≥ 7 cm) ending at 0830 hours IST of date:

27 May 2021

Odisha: Nawana-28, Joda-27, Joshipur-25, Lathikata-21, Jhumpura-21, Champua-20, Keonjhar-20, Panposh-20, Basudevpur-19, Chandikhol-17, Karanjia-17, Rajgangpur-14, Mandira Dam-14, Swam-Patna-13, Deogarh-13, Tiring-12, Udala-11, Gurundia-11, Barkote-11, Hatadihi-11, Tihidi-11, Pallahara-11, Ghatagaon-10, Lahunipara-10, Sharpada-10, Soro-10, Bamra-10, Binjharpur-9, Laikera-9, Jajpur-9, Kirmira-9, Talcher-9, Sukinda-8, Kuchinda-8, Telkoi-7, Kaptipada-7, Deogaon-7, Jenapur-7, Rairangpur-7, Bargaon-7, Kankadahad-7, Kolabira-7, Danagadi-7, Pattamundai-7, Bhadrak-7,

Jharkhand: Chaibasa-21, Mandar-18, Ranchi-15, Chakradharpur-13, Torpa-12, Kuru-11, Jamshedpur -11, Kharsema-11, Nimdih-10, Ramgarh-9, Jamshedpur-9, Chandil-8, Chatra-8, Manatu-8, Hariharganj-8, Hendigir-8, Shilaichak-7, Koner-7, Chandrapura-7,

Gangetic West Bengal: Diamond Harbour-11, Phulberia-11, Kharidwar-9, Labpur-8, Purihansa-8, Kalyani Smo-8, Uluberia -8, Mangalkote-7, Kansabati Dam-7,

Sub-Himalayan West Bengal & Sikkim: Rongli-9, Damthang-9, Darjeeling-9, Gyalsing-9, Pedong-8, Pakyong-8, Sankalan-7, Mangan-7, Singhik-7, Khanitar-7,

Bihar: Sherghati-7

Uttar Pradesh: Light to moderate rainfall occurred over many places over East Uttar Pradesh

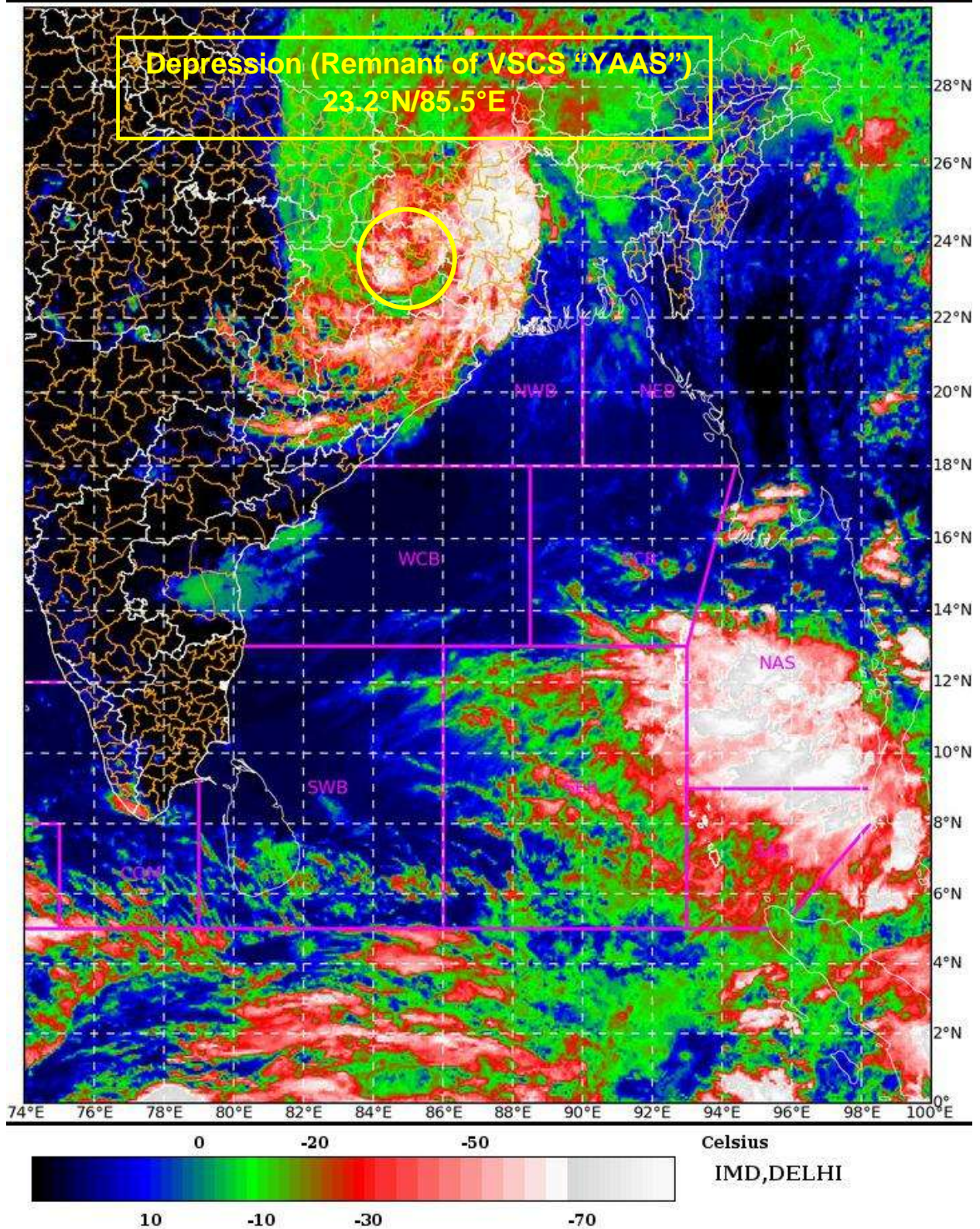
SAT : INSAT-3D IMG

27-05-2021/(0730 to 0757) GMT

IMG_TIR1_TEMP 10.8 um

27-05-2021/(1300 to 1327) IST

L1C Mercator



Contact: Cyclone Warning Division, Office of the Director General of Meteorology,
India Meteorological Department, Ministry of Earth Sciences.

Phone: (91) 11-24652484, FAX: (91) 11-24643128, 24623220, E-mail: cwdhq2008@gmail.com, Website: rsmcnewdelhi.imd.gov.in

Spatial rainfall distribution: Isolated: <25%, A few: 26-50%, Many: 51-75%, Most: 76-100%

Rainfall amount (mm): Heavy rain: 64.5 – 115.5, Very heavy rain: 115.6 – 204.4, Extremely heavy rain: 204.5 or more.



OBSERVED AND FORECAST TRACK OF DEPRESSION (REMNANT OF VERY SEVERE CYCLONIC STORM "YAAS") OVER CENTRAL PARTS OF JHARKHAND BASED ON 0600 UTC OF 27th MAY, 2021



DATE/TIME IN UTC

IST=UTC + 0530

L: LOW PRESSURE AREA

WML: WELL MARKED LOW PRESSURE AREA

D: DEPRESSION (17-27 KT)

DD: DEEP DEPRESSION (28-33 KT)

CS: CYCLONIC STORM (34-47 KT)

SCS: SEVERE CYCLONIC STORM (48-63KT)

VSCS: VERY SEVERE CYCLONIC STORM (64-89 KT)

ESCS: EXTREMELY SEVERE CYCLONIC STORM (90-119 KT)

SuCS: SUPER CYCLONIC STORM ≥ 120 KT

● LESS THAN 34 KT

○ 34-47 KT

⊙ ≥ 48 KT

— OBSERVED TRACK

— FORECAST TRACK

▲ CONE OF UNCERTAINTY

Contact: Cyclone Warning Division, Office of the Director General of Meteorology,
India Meteorological Department, Ministry of Earth Sciences.

Phone: (91) 11-24652484, FAX: (91) 11-24643128, 24623220, E-mail: cwdhq2008@gmail.com, Website: rsmcnewdelhi.imd.gov.in

Spatial rainfall distribution: Isolated: <25%, A few: 26-50%, Many: 51-75%, Most: 76-100%

Rainfall amount (mm): Heavy rain: 64.5 – 115.5, Very heavy rain: 115.6 – 204.4, Extremely heavy rain: 204.5 or more.